

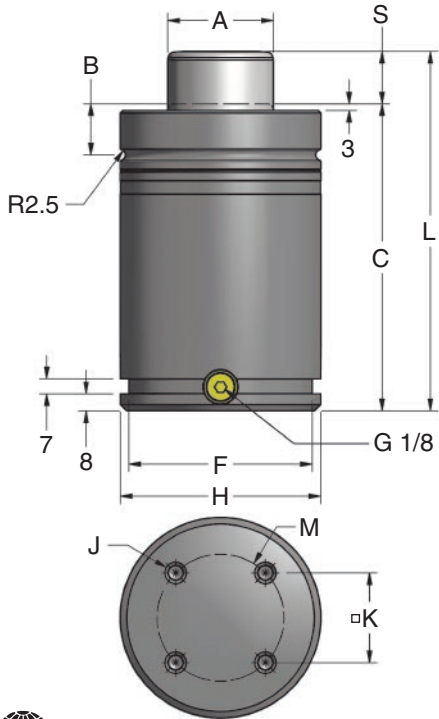
RX Series Nitrogen Gas Springs

90.10RX Series

The patented 90.10RX Series replaces the 90.10R – RIC Series utilizing concepts from DADCO's ISO Series. A direct replacement for the 90.10R, the 90.10RX Series matches the ISO envelope, reduces overall impact forces and emphasizes a robust design for long life.

NEW!

TO – Basic Model



- Mechanical shock and noise are reduced on initial impact.
- Matches ISO envelope.



Patented

Model	A	B	F	H	J	K	M
90.10RX.03000	ø50	24.0	ø87	ø95	4 x M8	42.4	ø60
90.10RX.05000	ø65	25.5	ø112	ø120	4 x M10	56.6	ø80
90.10RX.07500	ø80	27.5	ø142	ø150	4 x M10	70.7	ø100
90.10RX.10000	ø95	33.5	ø187	ø195	4 x M12	84.9	ø120

Part No.	Model	90.10RX.03000 30 kN / 3 ton		90.10RX.05000 50 kN / 5 ton		90.10RX.07500 75 kN / 7.5 ton		90.10RX.10000 100 kN / 10 ton		
		S mm	C	L ±0.25	C	L ±0.25	C	L ±0.25	C	L ±0.25
90.10RX.____.025		25.0	145.0	170.0	165.0	190.0	180.0	205.0	N/A	N/A
90.10RX.____.038		37.5	157.5	195.0	177.5	215.0	192.5	230.0	N/A	N/A
90.10RX.____.050		50.0	170.0	220.0	190.0	240.0	205.0	255.0	210.0	260.0
90.10RX.____.063		62.5	182.5	245.0	202.5	265.0	217.5	280.0	N/A	N/A
90.10RX.____.080		80.0	200.0	280.0	220.0	300.0	235.0	315.0	240.0	320.0
90.10RX.____.100		100.0	220.0	320.0	240.0	340.0	255.0	355.0	260.0	360.0
90.10RX.____.125		125.0	245.0	370.0	265.0	390.0	280.0	405.0	285.0	410.0
90.10RX.____.160		160.0	280.0	440.0	300.0	460.0	315.0	475.0	320.0	480.0
90.10RX.____.200		200.0	320.0	520.0	340.0	540.0	355.0	555.0	360.0	560.0
90.10RX.____.300		300.0	420.0	720.0	440.0	740.0	455.0	755.0	N/A	N/A

Ordering Information:

90.10RX.05000.025. TO. C. 150

Part Number: Includes Series, Model and Stroke Length.

Mount Option: TO = Basic Model.

For a complete selection of mounts, refer to the 90.10 Catalog. *When not specified, default is TO.*

Charging Pressure: 15–150 bar (220–2175 psi). *When not specified, default is 150 bar.*

Operating System: C = Self-Contained, F = Open Flow Fitting. *When not specified, default is C, self-contained.*

For information on other products from DADCO that reduce pad bounce, refer to bulletin B02107A on DADCO's Pad Bounce Reducers.

B09167

Technical Data

Operating Specifications

Charging Medium:	Nitrogen Gas
Charging Pressure Range:	15 – 150 bar (220 – 2175 psi)
Operating Temperature:	-6°C – 71°C (20°F – 160°F)*
Maximum Speed:	.5 m/sec (20 in/sec)

*For extended range applications contact DADCO.

90.10RX Series Repair Kits

Include a fully assembled DADCO cartridge, dust cover, bottle of assembly oil and step-by-step maintenance manual.

Model	Kit Number
90.10RX.03000	90.201RX.03000
90.10RX.05000	90.201RX.05000
90.10RX.07500	90.201RX.07500
90.10RX.10000	90.201RX.10000

Comparison of DADCO 90.10 and 90.10RX Gas Springs

To assess the ability of RX Series Springs to reduce overall impact forces, it is necessary to take into account the other dynamic forces acting within the press tool.

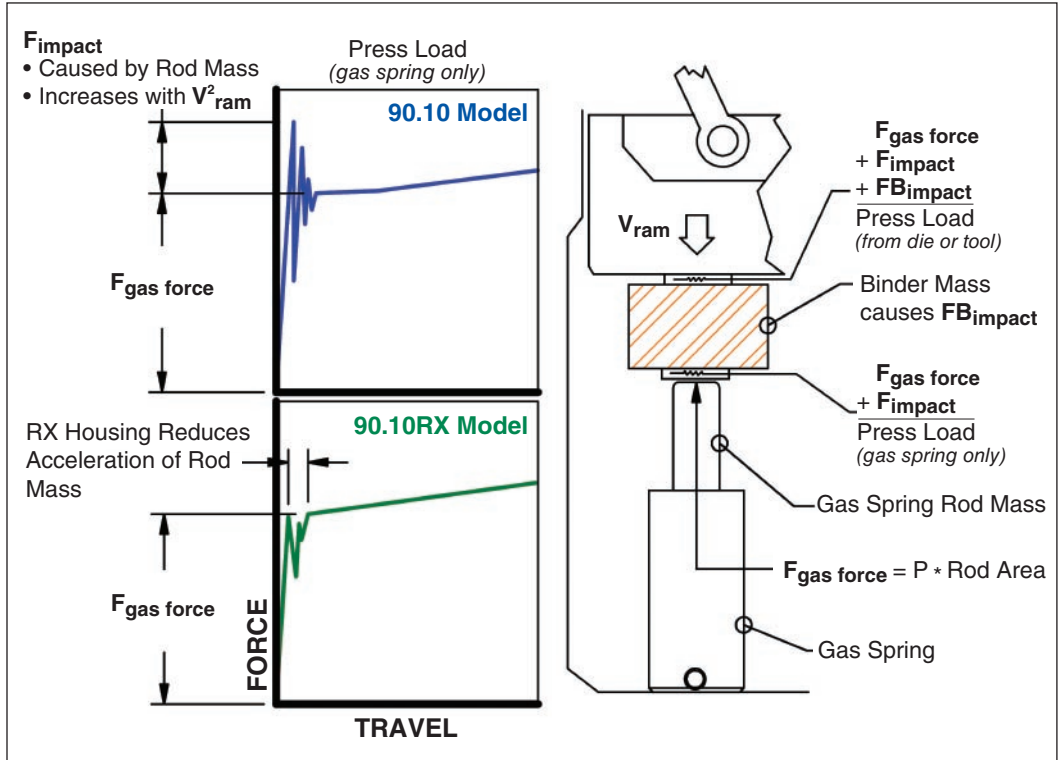
F_{gas force} = Nominal gas spring force required for forming

F_{impact} = Impact force caused by rod mass

FB_{impact} = Impact force caused by binder or pad mass

V_{ram} = Ram Velocity

NOTE: The RX Series will not reduce impact to press caused by binder mass (FB_{impact}).



Mount Options

TSW Welded



TFM Welded



B12 ISO 90.12



B21 ISO 90.21



DADCO offers a wide variety of mounts. Refer to the 90.10 Catalog for DADCO's full line of mounts and accessories.

DADCO®

The global leader in nitrogen gas spring technology

43850 Plymouth Oaks Blvd. • Plymouth, MI • 48170 • USA
734.207.1100 • fax 734.207.2222 • 800.323.2687 • www.dadco.net